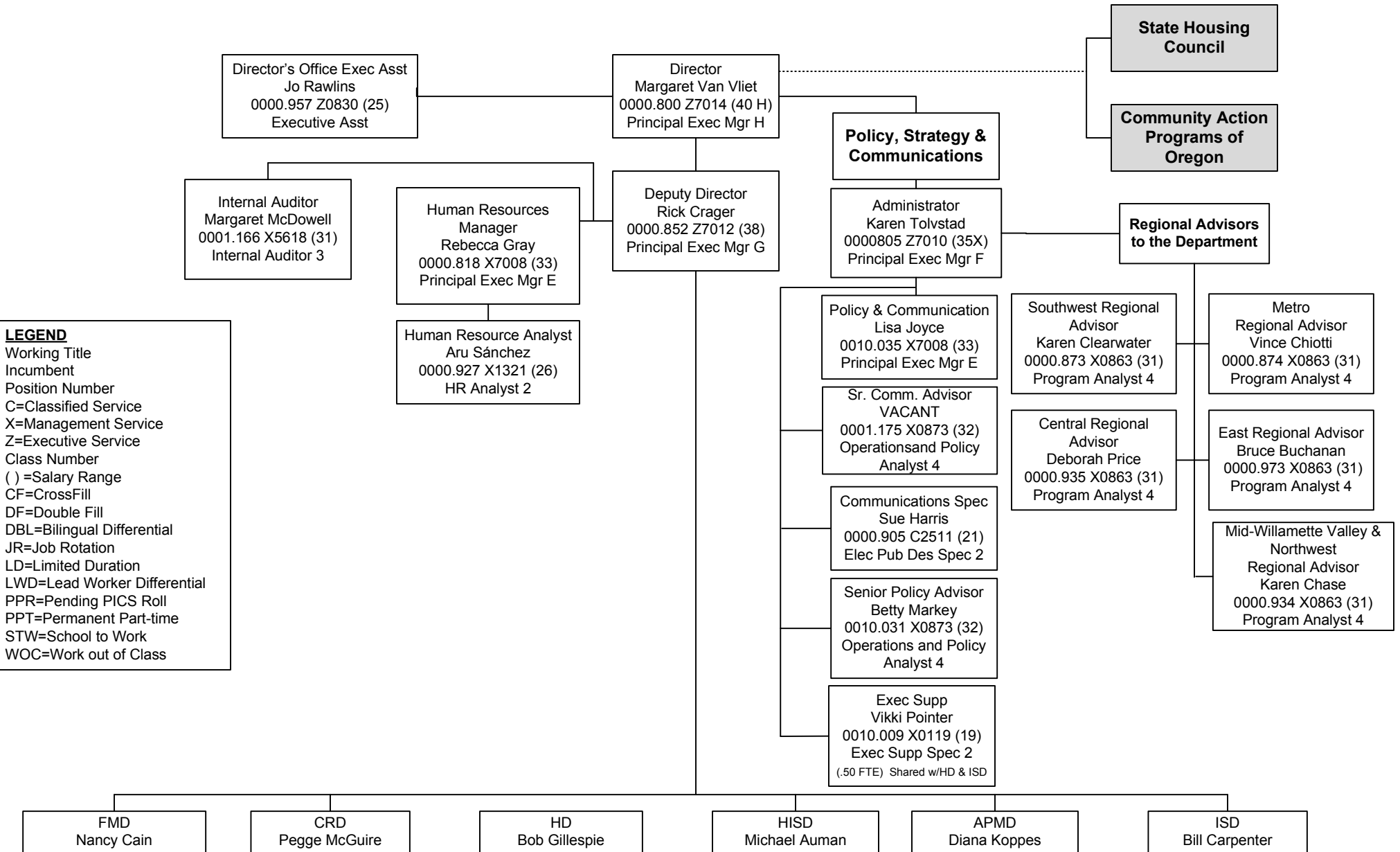
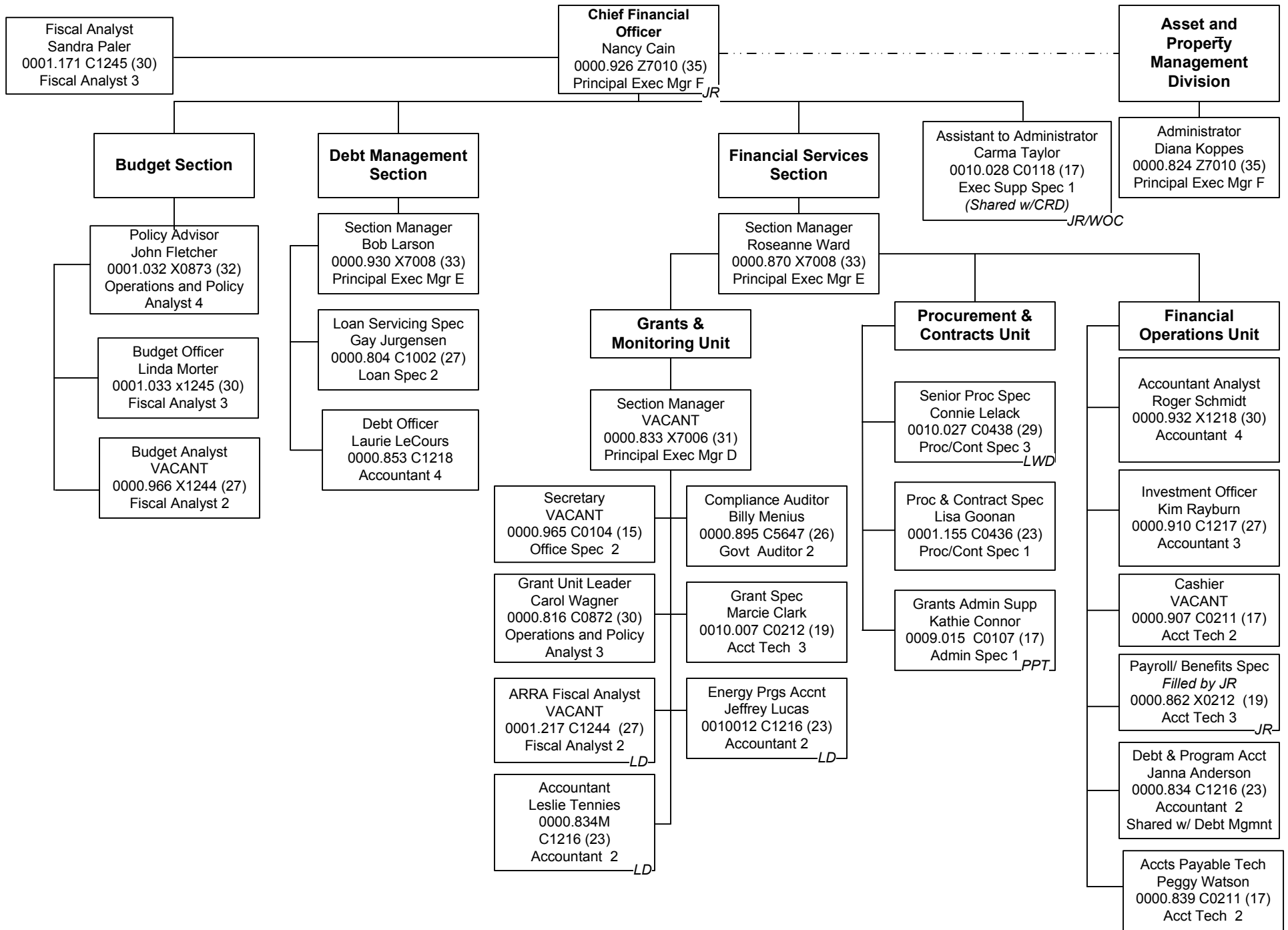


# Oregon Housing and Community Services (91400) Director's Office

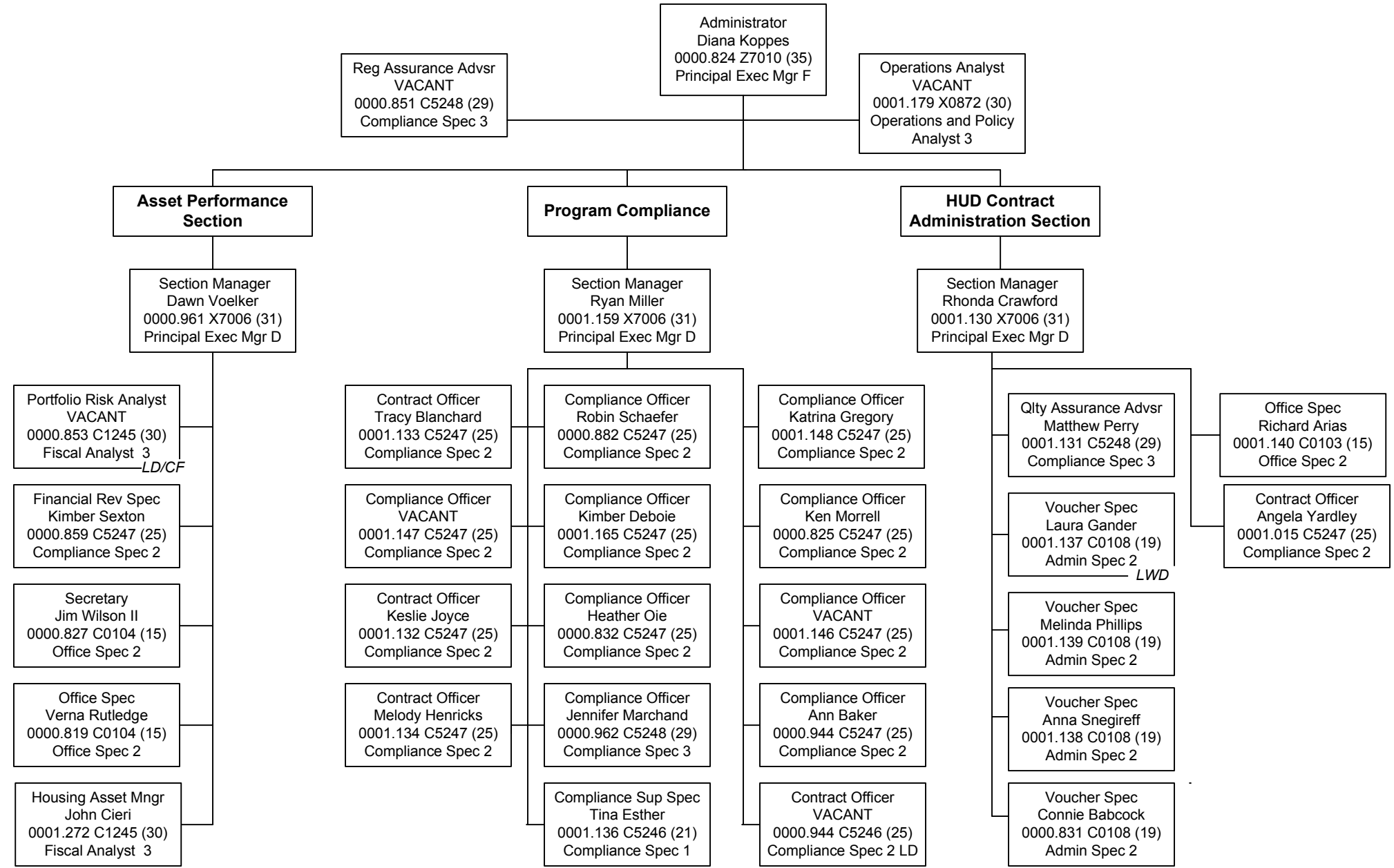


**LEGEND**  
 Working Title  
 Incumbent  
 Position Number  
 C=Classified Service  
 X=Management Service  
 Z=Executive Service  
 Class Number  
 ( ) =Salary Range  
 CF=CrossFill  
 DF=Double Fill  
 DBL=Bilingual Differential  
 JR=Job Rotation  
 LD=Limited Duration  
 LWD=Lead Worker Differential  
 PPR=Pending PICS Roll  
 PPT=Permanent Part-time  
 STW=School to Work  
 WOC=Work out of Class

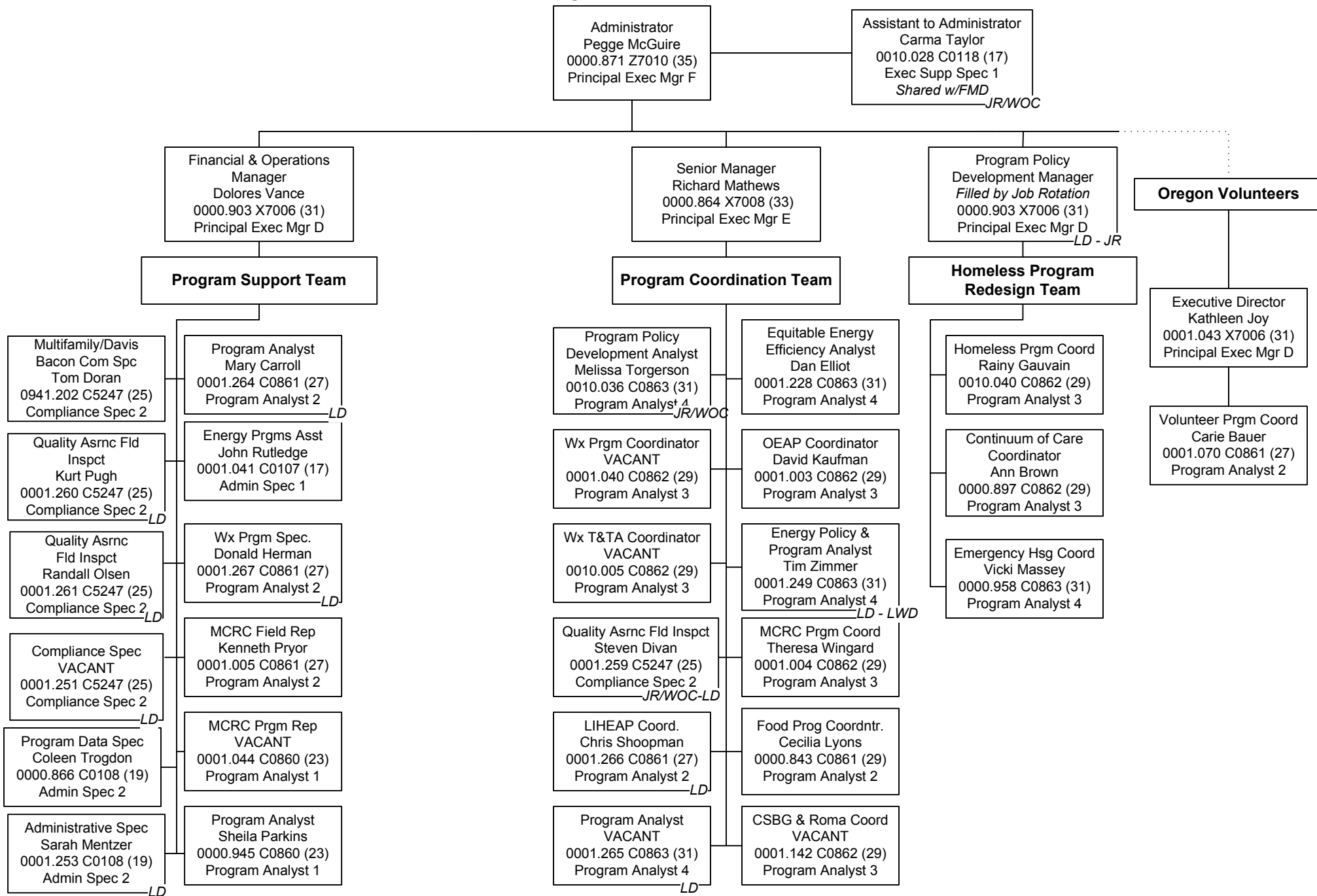
# Oregon Housing and Community Services Financial Management Division



# Oregon Housing and Community Services Asset and Property Management Division

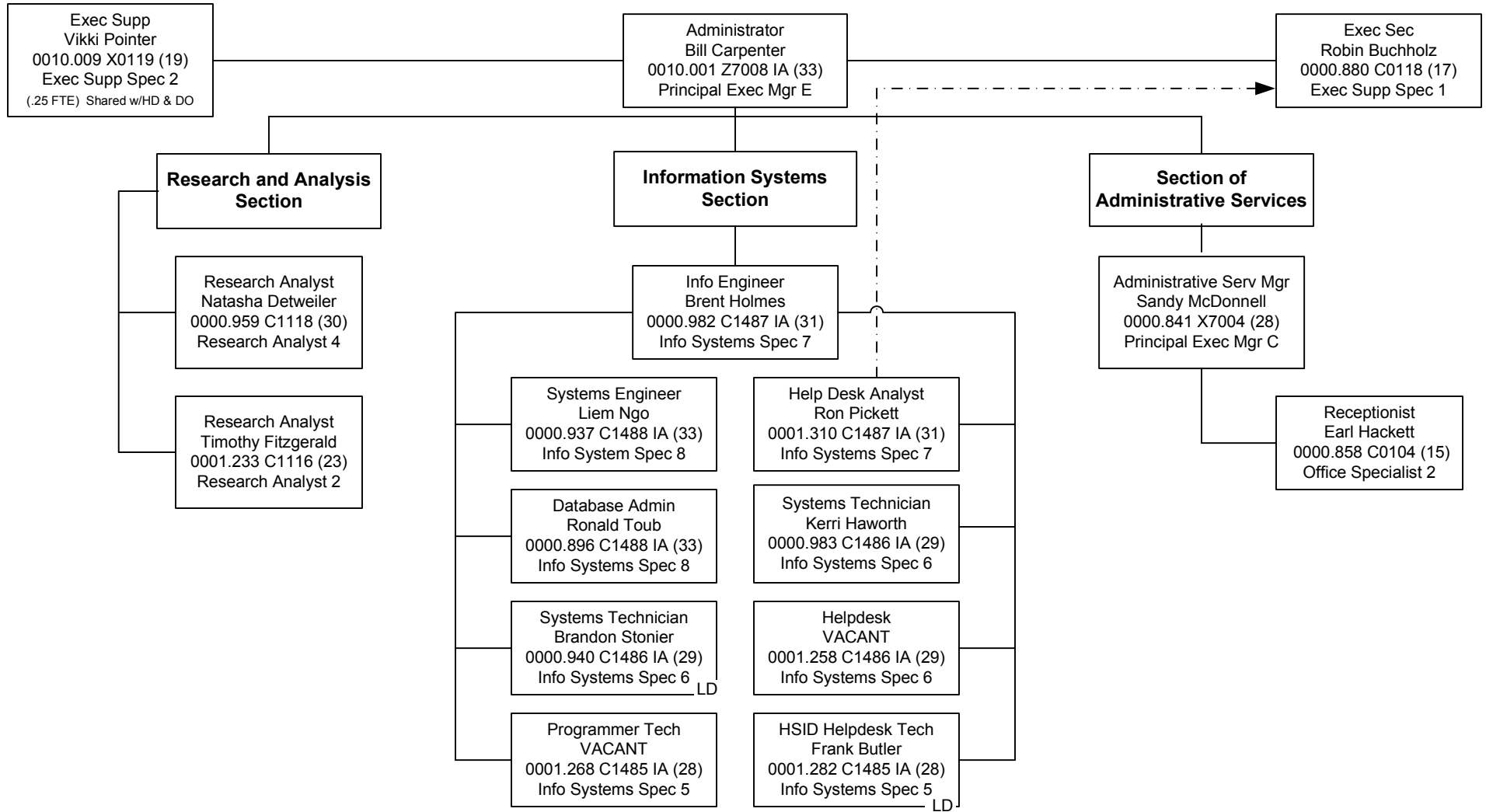


# Oregon Housing and Community Services Community Resources Division

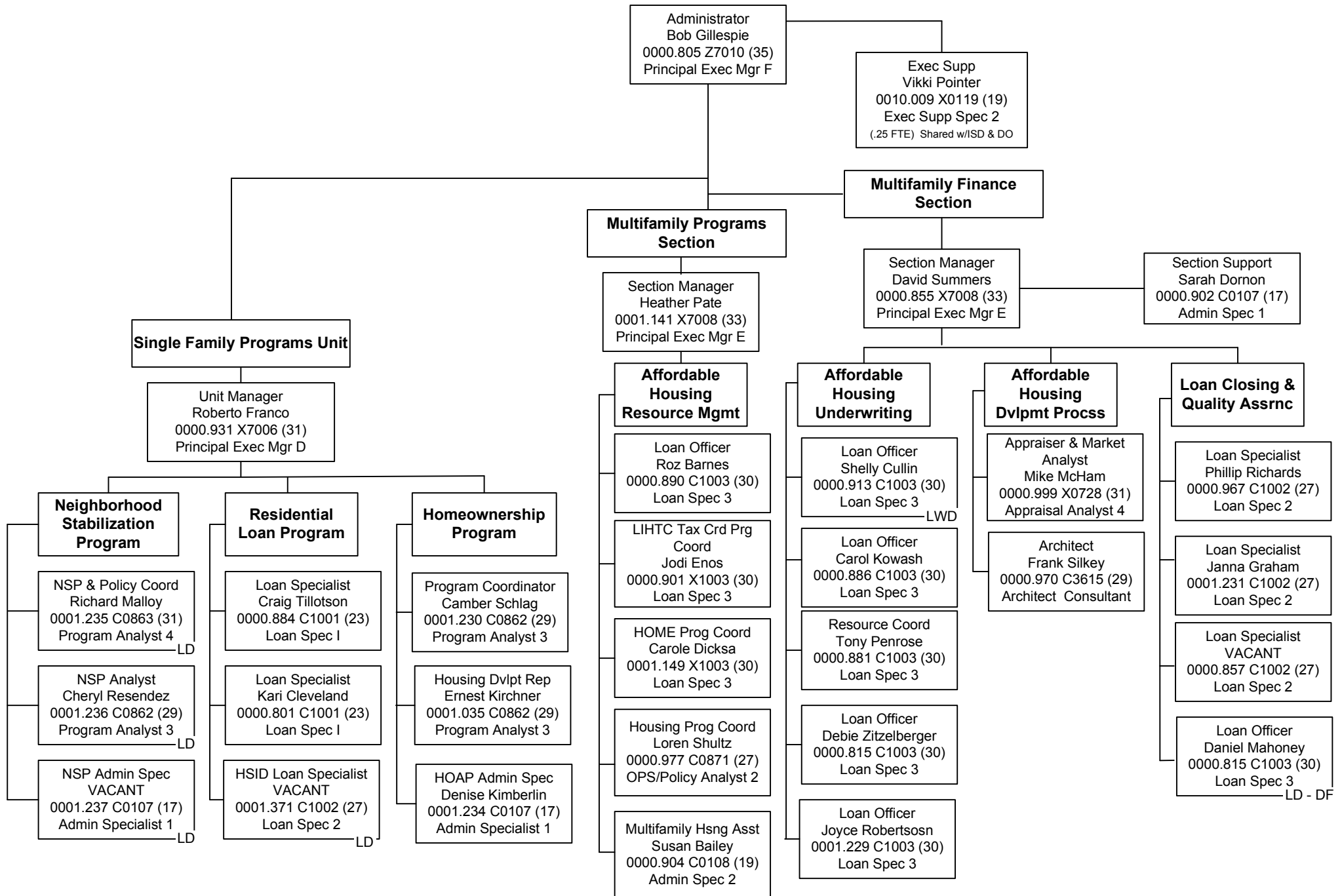


# Oregon Housing and Community Services Information Services Division

1/3/2012



# Oregon Housing and Community Services - Housing Division



# Oregon Housing and Community Services Homeownership Stabilization Initiative Division

