

Viewing the Neighborhood Stabilization Programs target area boundaries in Google Earth allows you to zoom to a specific project address and verify that it's in an area that is eligible for the use of funds. It also allows you to export map pictures to document their location eligibility.

Step One: Google Earth Installation

Have the latest version of Google Earth installed on your computer.

If you don't have it installed already, Google provides this software download for free, go to the following website, download the installation package and follow directions to install completely:

<http://earth.google.com/download-earth.html>

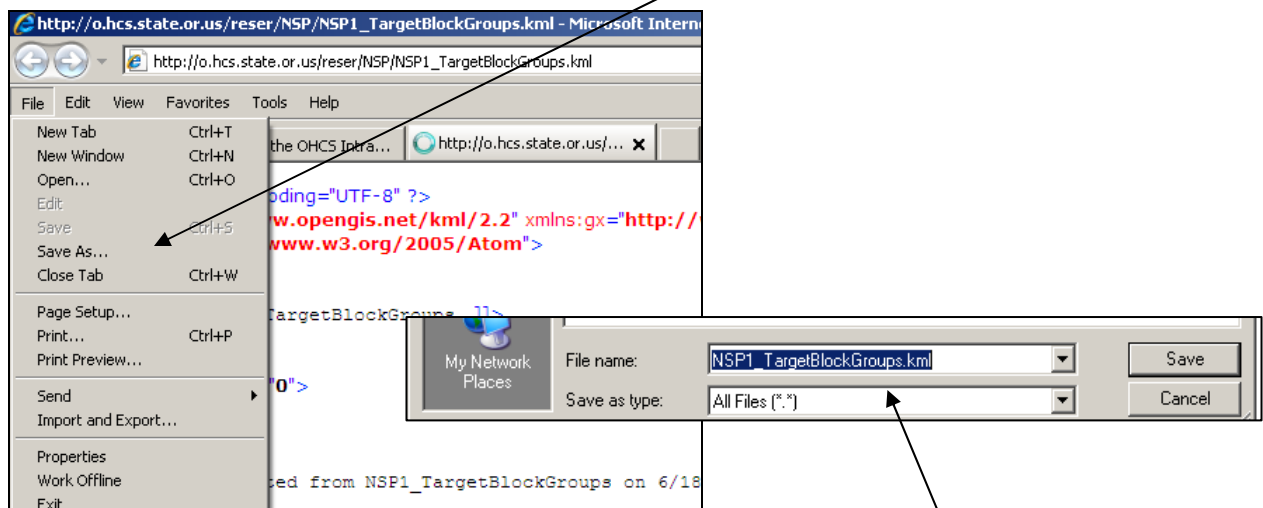
Note: you will need to have administrative privileges on your computer in order to install this software, if you don't then you will need to contact your tech support to complete this installation

Step Two: Download OHCS Neighborhood Stabilization Program .KML File

You can download the OHCS Neighborhood Stabilization Program .KML boundary file from the OHCS website here: http://o.hcs.state.or.us/reser/NSP/NSP1_TargetBlockGroups.kml This will open a webpage full of code like this:

```
<?xml version="1.0" encoding="UTF-8" ?>
- <kml xmlns="http://www.opengis.net/kml/2.2" xmlns:gx="http://www.google.com/kml/ext/2.2" xmlns:kml="http://www.opengis.net/kml/2.2"
  xmlns:atom="http://www.w3.org/2005/Atom">
- <Document>
  - <name>
    <![CDATA[ NSP1_TargetBlockGroups ]]>
  </name>
  <open>1</open>
- <Snippet maxLines="0">
  <![CDATA[ ]]>
</Snippet>
- <description>
  <![CDATA[ Exported from NSP1_TargetBlockGroups on 6/18/2009 ]]>
</description>
- <Style id="FEATURES">
  - <LineStyle>
    <color>CC6E6E6E</color>
    <width>0.4</width>
```

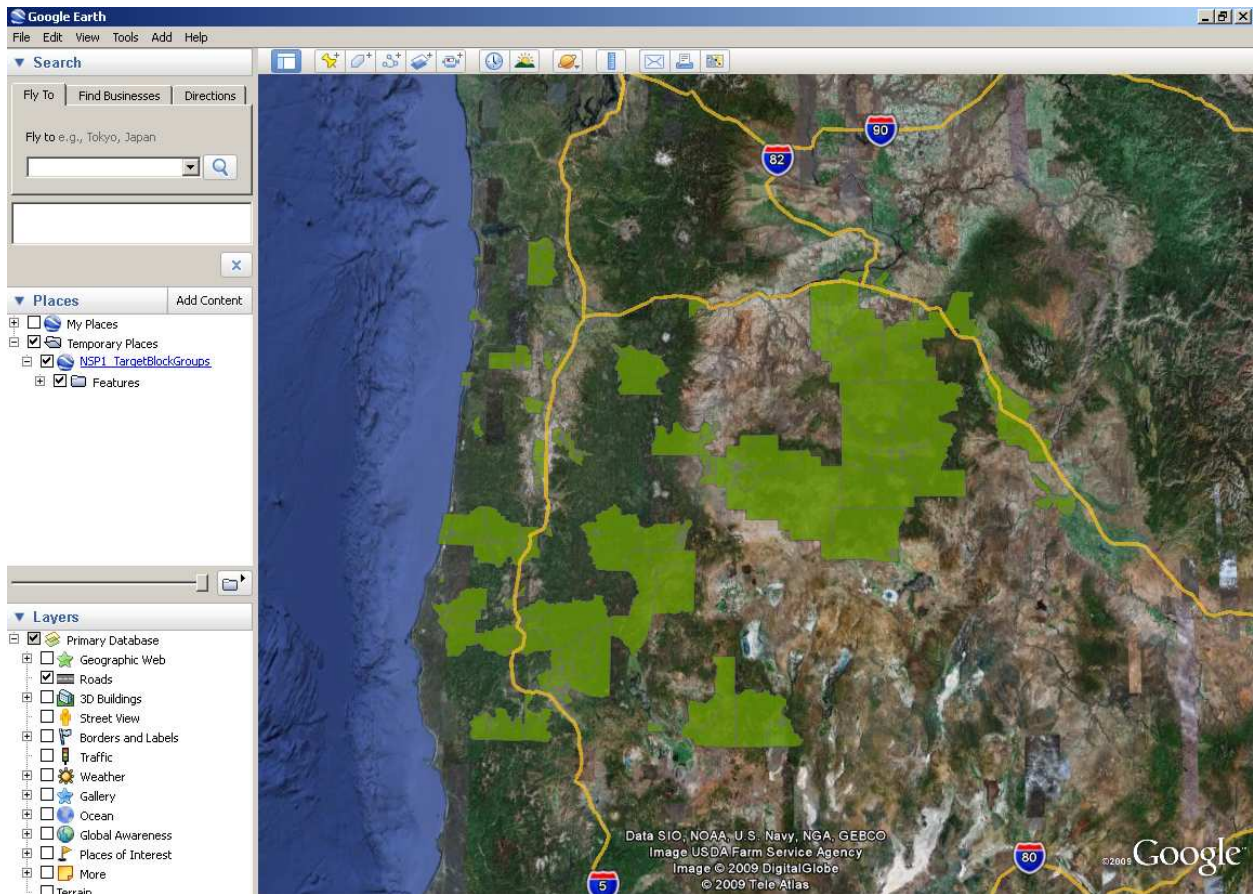
To save the file on your desk top, in the web browser, go to FILE, SAVE AS and save the file in an accessible location on your computer.



Note: Google Earth files have the .KML extension (this file is called "NSP1_TargetBlockGroups.kml")

Step Three: Open OHCS Files in Google Earth

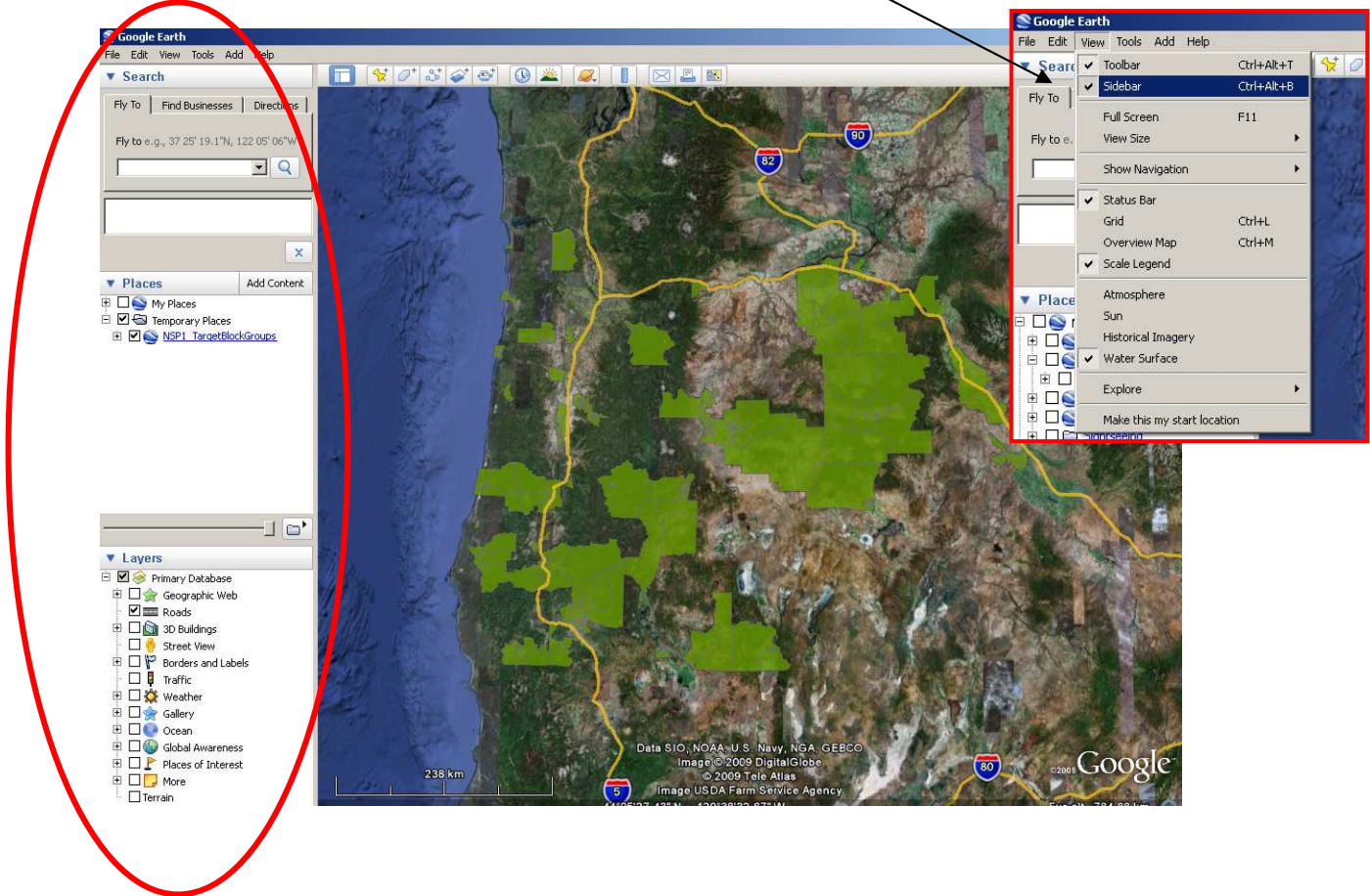
Double Click the downloaded Neighborhood Stabilization Program Target Block Group .KML file and it will open into Google Earth as seen below. The green areas identify the NSP1 eligible target areas.



Step Four: Google Earth Orientation

On the left hand side of the screen, you should see a side bar listing “Search”, “Places” and “Layers” as seen below in the red circle.

If you don't see this, go to the View menu and make sure “Sidebar” is selected

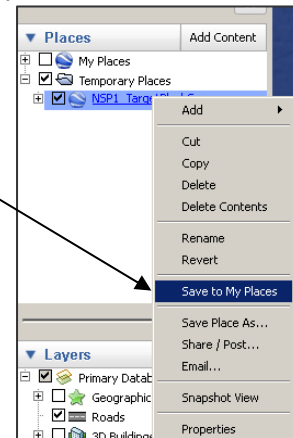


The NSP1_TargetBlockGroups file will be listed in the **Places** box. If you don't see it you can scroll down in the **Places** Box, below the default “My Places” to where it is listed under “Temporary Places”



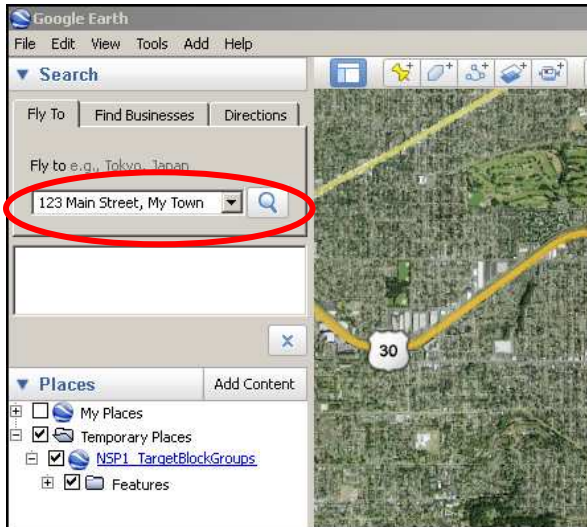
The check box next to each of the file names turns it “On” and “Off” in the map.

To make it so that this file appears every time you open Google Earth, Right Click the NSP1_TargetBlockGroups and select “Save to My Places”

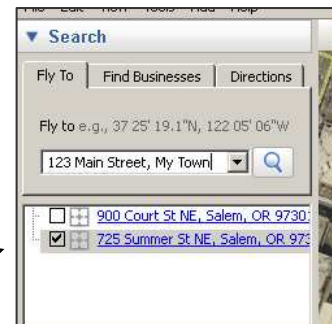


Step Five: Identify a Specific Address

To place a specific address on the map, type the address into the box in the upper left hand corner that says “Fly To” then press Enter or click the magnifying glass to the right of the box. The map will then zoom to that address and display a locator box, and label the address on the map.



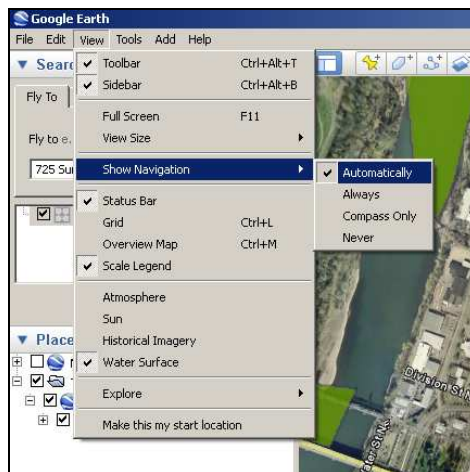
You'll notice that just like in the **Places** box, in the **Search** box, the addresses that you've searched for on the map will be listed, and you can turn them “On” and “Off” in the map with the check boxes



Step Six: Zooming

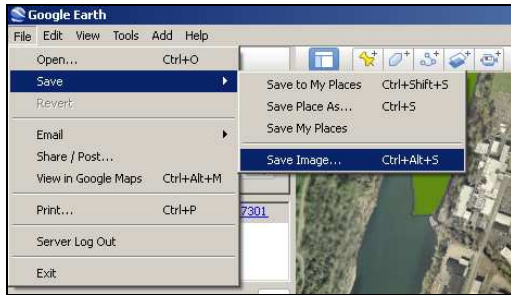
You can Zoom In and Out using the scroll function on your mouse, or the zoom tool on the Google Earth screen.

If you don't see the zoom tool on the screen, go to the View Menu, “Show Navigation” and make sure “Automatically” is selected:



Step Seven: Exporting Pictures

You are able to save the map view that you see on the screen as a picture which you can then email, or insert into word documents. A very easy way to do this is to go to the File menu, “Save” and then select “Save Image” You will then specify where you want to save the picture/.JPG file.



Step Eight: Learn More about Google Earth!

There is extensive information about the functions and use of Google Earth in the “Google Earth User Guide” available online here: <http://earth.google.com/intl/en/userguide/v5/>

If you have any questions about the OHCS Google Earth files, contact Natasha Detweiler at Natasha.Detweiler@state.or.us